



intelligent management packs

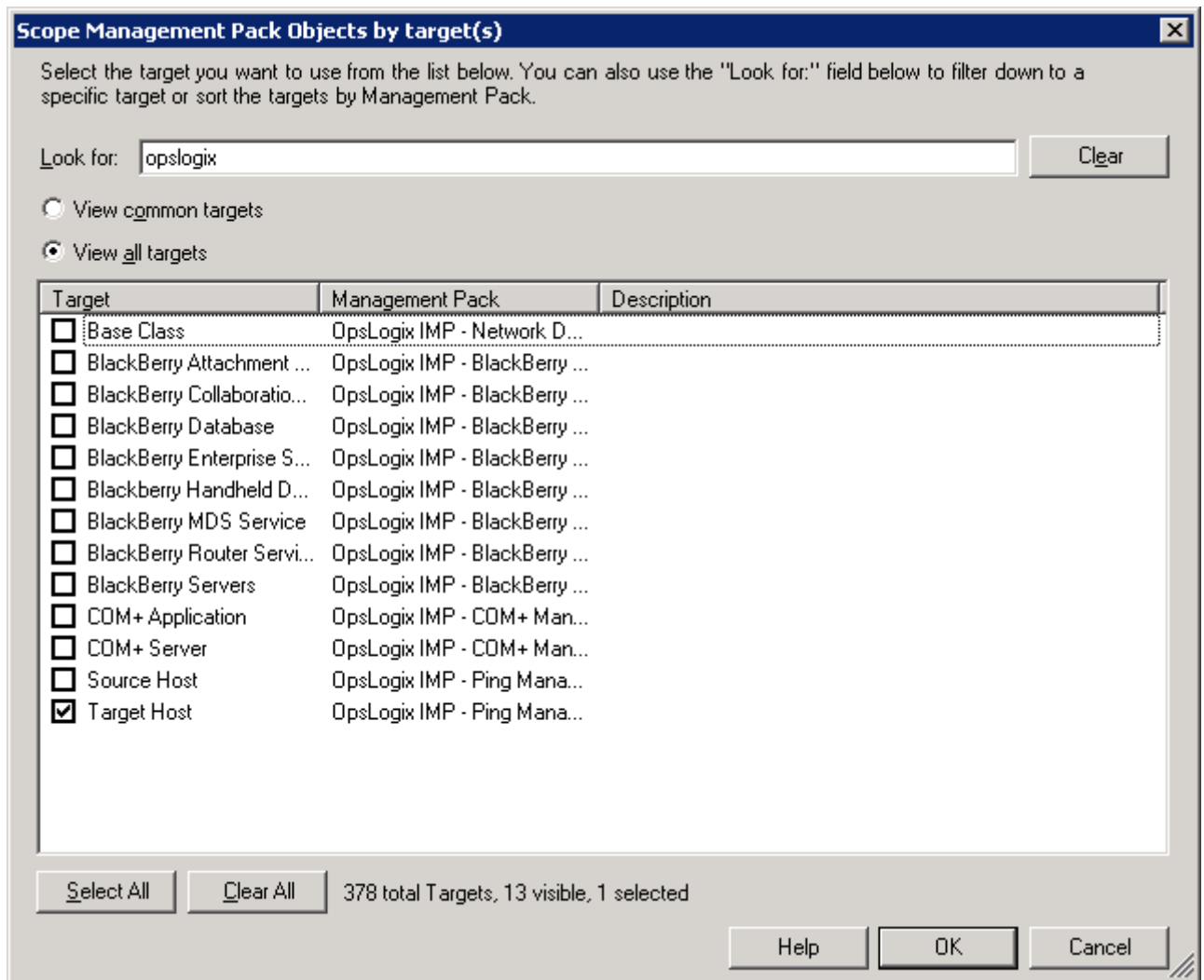
## **Ping Management Pack (Interval change)**

*This guide shows you how to change the monitoring interval.*

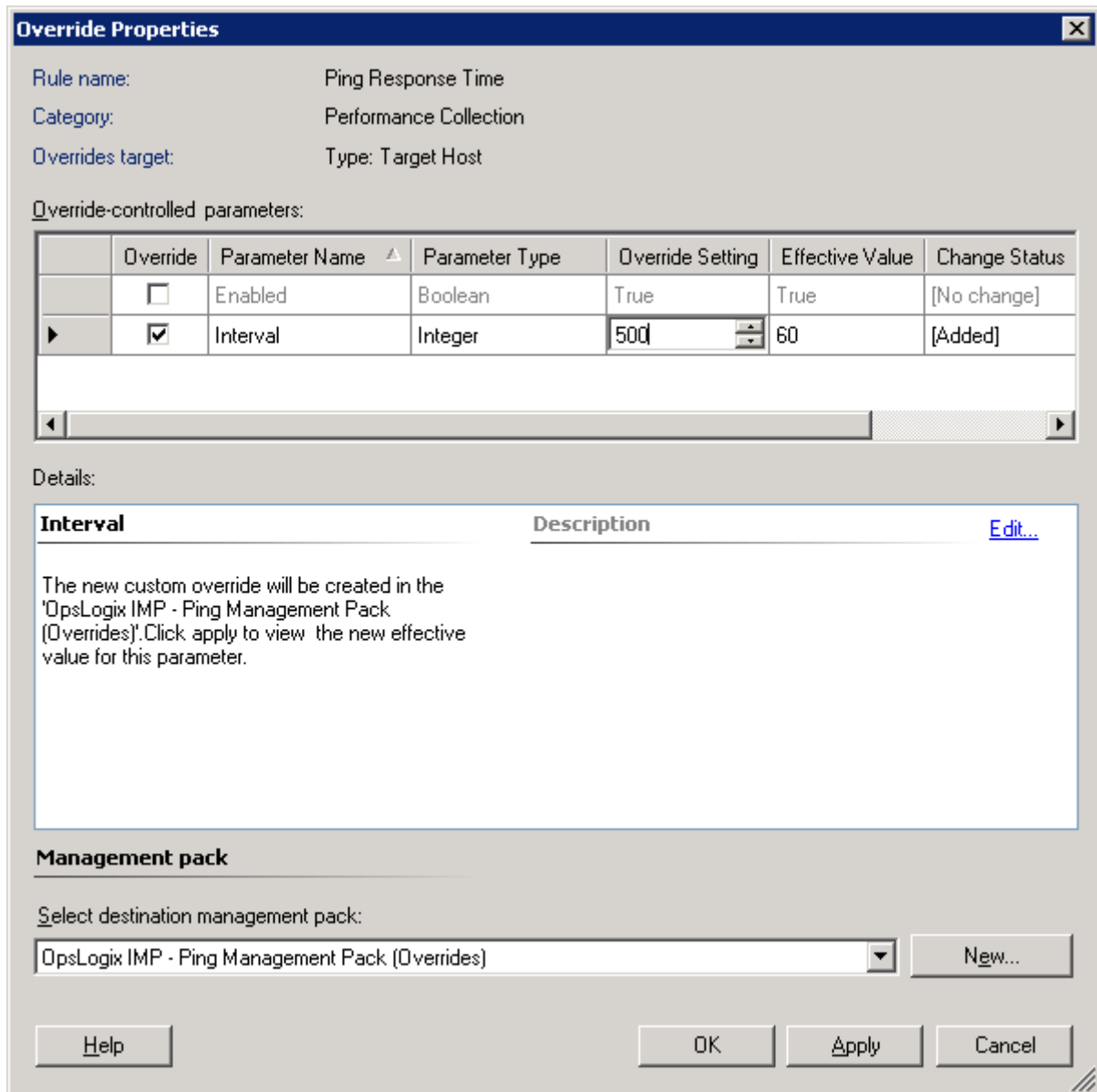
The monitoring interval is set rather aggressive because some customers use the ping pack for monitoring network components. They would like to know immediately when a device goes down so that they can prevent a string of users calling the helpdesk. Opslogix got a few questions how to change the default interval.

One of our users choose to override the monitor rather than the rule that inserts performance data. If this is done you only override the monitor, it will only affect the interval of state changes. If you would like to override the rule for the sample interval, please do the following:

Select Rule in the Authoring section, scope to “OpsLogix” and select “Target Host”.



Override the rule “Ping response time”



This should adjust the rate of sample collection.

For more information, please visit  
[www.opslogix.com](http://www.opslogix.com)